



**Thermostat
LumiSmart 25**

TECHNICAL CERTIFICATE



CONTENTS:

Introduction	3
Controls and display	4
Maintenance temperature control	5
The LumiSmart 25 thermostat installation manual.....	6
Scope of delivery.....	6
Installation and connection.....	6
Floor temperature sensor installation	8
Thermostat installation.....	8
Mounting the thermostat	11
Assembling the device.....	12
Technical data.....	13
Transportation and storage.....	14
Safety measures	14
Guarantee obligations	15
Guarantee card.....	16

ATTENTION!

Please read this manual carefully before starting the installation

INTRODUCTION

The LumiSmart 25 thermostat is designed to control electrical heating systems of premises. The thermostat maintains a comfortable temperature of the heated surface and provides efficient energy consumption. The thermostat provides heating control using one of two temperature sensors: the floor sensor (included in the scope of delivery) and the built-in air sensor which is used when the floor sensor is not connected.

The thermostat can control water heated floors when using a normally closed thermal head with 230 V control voltage (see Figure 5 on page 11).

The device is installed in the wall next to the heating cable installation wires (see the "Floor temperature sensor installation" section on page 8).

CONTROLS AND DISPLAY

"ON" button and adjustment ring are used for thermostat regulation.

1. The "ON" Button
2. The temperature scale
3. The adjustment ring



Figure 1

Maintenance temperature control

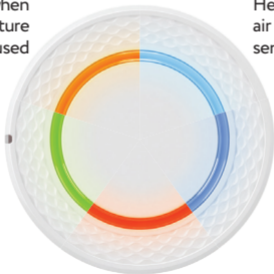
To control the maintenance temperature, use the adjustment ring to set the desired temperature. The thermostat will keep it by turning OFF the heating when overheating by 1 degree is detected and turning it ON when the temperature drops by 1 degree below the set value.

Heating is ON when
floor temperature
sensor is used

Heating is ON when
air temperature
sensor is used

Heating is OFF

Open window
feature is enabled



Error is detected

THE LUMISMART 25 THERMOSTAT INSTALLATION MANUAL

Scope of delivery

1. LumiSmart 25 Thermostat
2. Floor temperature sensor with the installation wire (2 m \pm 10 %)
3. Technical certificate
4. Packing box

Installation and connection

Tools and materials required:

1. Corrugated plastic tube min 16 mm in diameter (the length depends on the thermostat mounting location)
2. Standard plastic mounting box
3. External terminal connector for the earthing line connection
4. Slot screwdriver
5. Mains phase indicator

IMPORTANT!

Refer to the "Installation and connection" section of this Manual for the connection diagram and installation guidelines.

We recommend to use the services of qualified specialists when installing the thermostat and heating system. The electrical connection and connection to the mains must be performed by a professional electrician.

The installation instructions and wiring diagram do not replace the professional skill of the device installer.

The manufacturer's guarantee does not cover any product defects caused by mechanical damage, improper installation, or operation for purposes or under conditions not provided by the installation and operation instructions.

IMPORTANT!

Disconnect your local wiring from the mains before connecting the thermostat or disconnecting it to check or replace it. Electrical connections of the device and its connection to the mains must be performed by a qualified electrician.

Floor temperature sensor installation

The floor temperature sensor should be placed in a corrugated plastic tube near its end. This end of the tube must be sealed to prevent penetration of tile fixing solution or cement mortar during the warm floor installation.

Place the tube in preliminarily prepared groove (chase) in the floor and lead its other end to the place chosen for the thermostat or junction box location. Cut the excessive tube and the sensor installation wire to a proper length.

Thermostat installation

Preparation of electrical connections

Install the mounting box or the intermediate junction box (if you plan to use it).

Lead power supply cable, installation wires of the warm floor heating elements, temperature sensor installation wire to the box.

IMPORTANT!

The floor temperature sensor is installed when you perform your heating element (mat, cable section or film) installation.

The thermostat is installed at the end of the warm floor system installation.

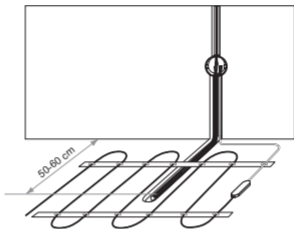


Figure 3

Energize the supply cable and find the phase wire and the neutral wire using the mains phase indicator; mark these wires. De-energize the supply cable.

Connect all required wires to the thermostat using its terminals with screw fastening.

The temperature sensor is connected to terminals 1 and 2 (polarity does not matter). The supply voltage (230 VAC) is applied to terminal 5 and 6, at that the phase wire (detected by the indicator) – to terminal 6, and the neutral wire – to terminal 5.

The heating element installation wires are connected to terminals 3 and 4; the screening braid output (yellow-green wire) – to the protec-

tive earthing (PE) line via the external terminal contact (not included in the scope of delivery) (Figure 4).

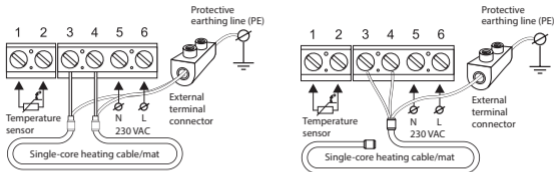


Figure 4

Connection diagram of the thermostatic head to the thermostat to control water heating systems.

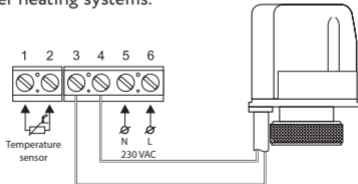
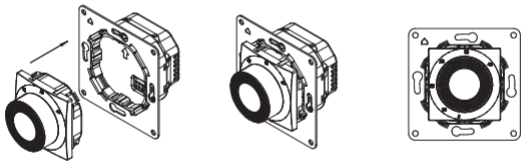


Figure 5

Mounting the thermostat

Disassemble the device.

1. Remove the front cover. For that, carefully press in turn, by thin slot screwdriver, the latches located on the lower side of the front cover, pulling it slightly out (Figure 6a).
2. Take off the cover (Figure 6b).
3. Place the rear part of the device into the mounting box and fasten by means of at least two screws.

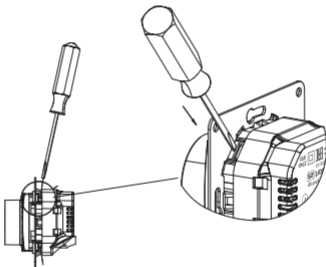


To assemble the device, it is required to align the arrows on the power supply part with those on the control part of the unit and install the control part pushing it up to fixation

Figure 6a

Assembling the device

Install the front cover carefully on the upper latches of the rear part of the device and press the cover at an angle up to the click of all latches. Make sure that the front cover tightly adjoins the rear part of the thermostat installed in the mounting box.



To disassemble the device, carefully press in turn, by thin slot screwdriver, the latches located at the angles and pull the control part out.

Figure 6b

TECHNICAL DATA

Supply voltage	230 VAC
Maximum load current	16 A (3.5 kW)
Power consumption	450 mW
Weight	130 gr
Dimensions	80×80×57 mm
Ingress protection rating	IP31
Protection class	II
Floor temperature sensor, included in the scope of delivery (TST02)	NTC 6.8 kOhm
Sensor installation wire length	2 m ± 10%
Permissible ambient air temperature	from +5 °C to +40 °C
Permissible relative air humidity	80 %
Temperature control range	from +5 °C to +45 °C
Service life	Min 5 years
"Open window detection" feature	Yes

TRANSPORTATION AND STORAGE

It is allowed to transport the thermostat by all transport means in accordance with the rules of transportation operating for the particular means of transport used.

SAFETY MEASURES

The thermostat conforms to the requirements of the Technical Regulations

EN 60730-1: 2016

EN 55014-1: 2017

EN 61000-3-2: 2014

EN 61000-3-3: 2013

EN 55014-2: 2015.

The power connection of the thermostat must be performed by a qualified electrician. All the installation and connection works with the units must be performed with the power supply disconnected.

GUARANTEE OBLIGATIONS

The manufacturer guarantees that the quality of the thermostat meets the requirements of Technical Specifications provided that transportation rules as well as installation and operation guidelines are observed.

Guarantee period – 3 years from the date of sale.

During the guarantee period, the buyer has the right for repair or replacement of the unit when detecting failures occurred through the manufacturer's fault and if the recommendations for installation and operation are followed.

Claims

If faults occur during the guarantee period of the device, the buyer must immediately contact the manufacturer's service center or its authorized regional representative.

The Service Center: +7 495 728-80-80, garant@sst.ru

141008, Russia, Moscow region, Mytishi,

Proektiruemyj proezd 5274, Bldg. 7.

Addresses and phone numbers of service centers in other regions are specified on the website www.sst-iwarm.com

The thermostat LumiSmart 25,

date of manufacture _____,

has passed factory tests and is certified as ready for operation

QCD stamp here _____

Date of sale _____

Seller's stamp here

The manufacturer: **Zavod SST TP LLC**
Russia 141008 Mytischy, Moscow region,
Proektiruemyj proezd 5274, Bldg. 7
Tel./fax: +7 495 728-80-80; e-mail: sst@sst.ru;
www.sst-iwarm.com

Passed for printing on 25.05.2020