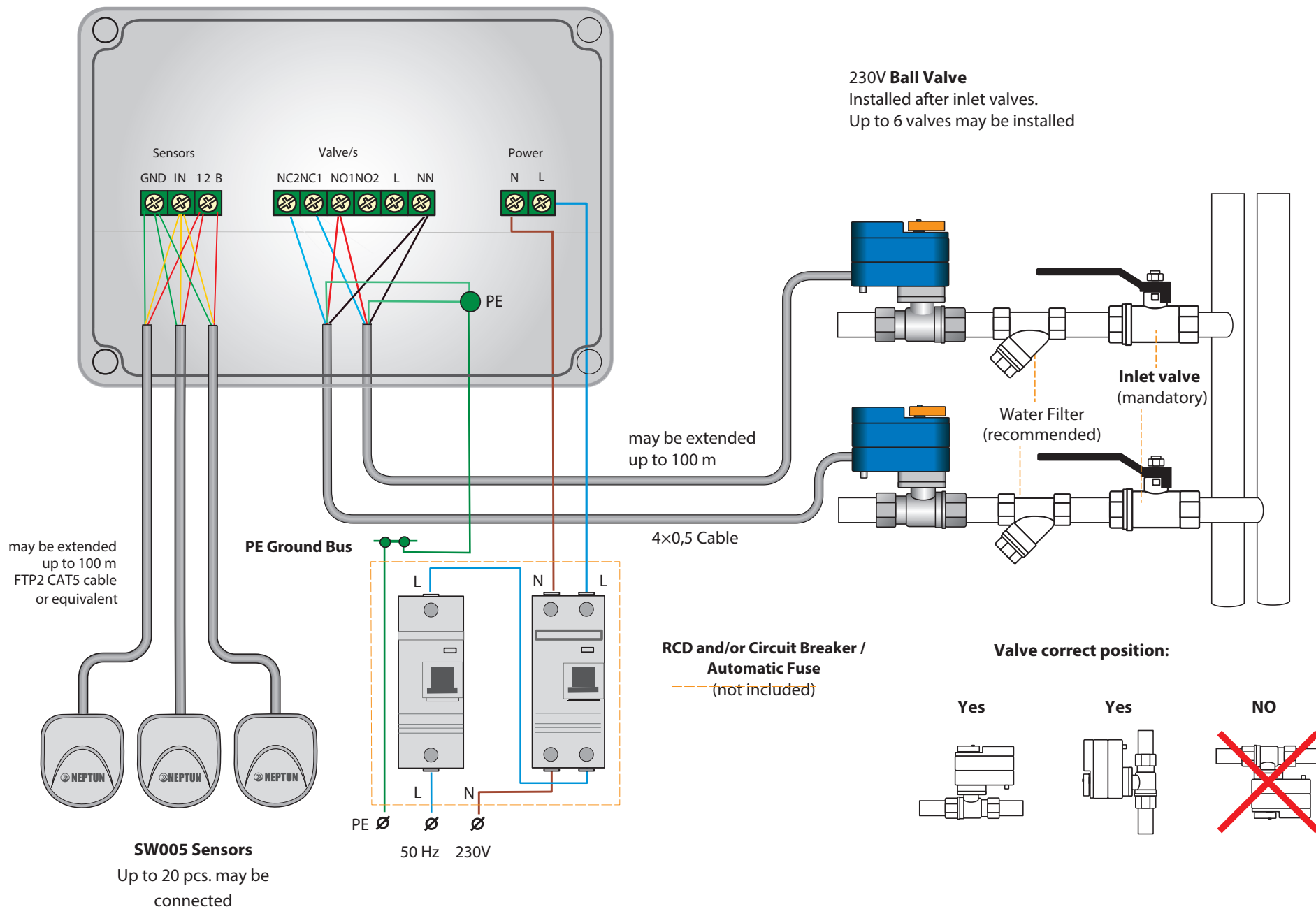
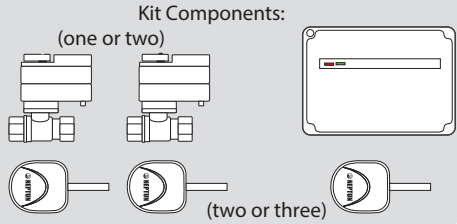


# Neptun Base Light / Neptun Base Module Connection Schematics



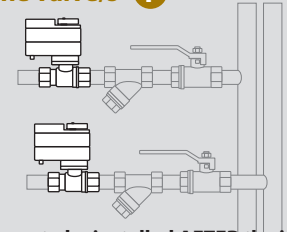
**CONGRATULATIONS! You purchased Neptun Leak Detection / Flood Prevention System!**



**Draw the System Installation Plan**



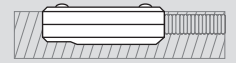
**Install the valve/s 1**



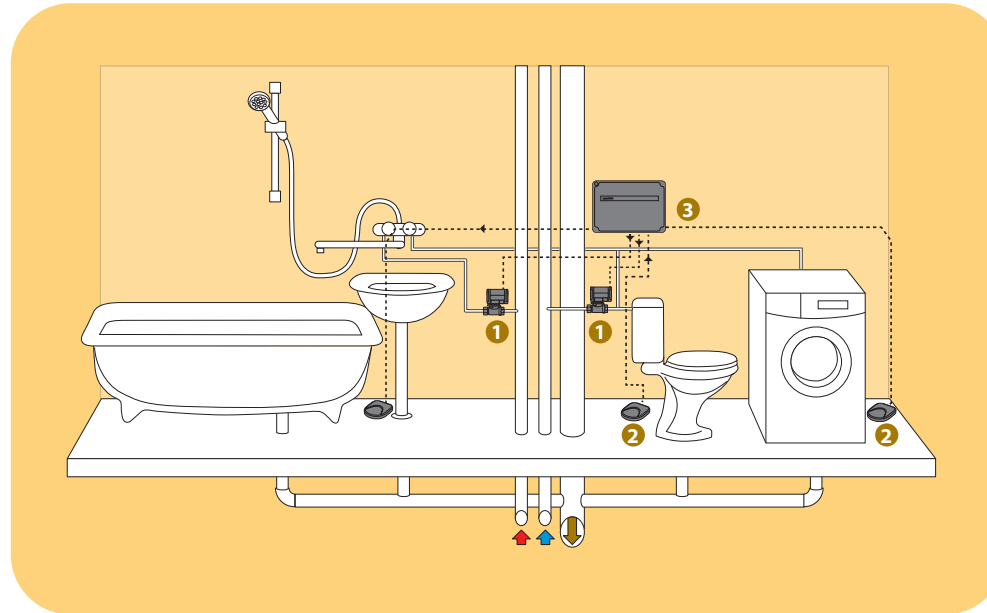
The valves are to be installed **AFTER** the inlet valves!!! (see the reverse)

**Install the wired sensors 2**

Aflush the floor



Up on the floor surface



Switch the **ALARM** signal off by turning off the Control Module (small button at the housing bottom)

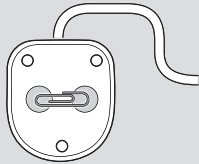
Switch the Control Module on

**The System is ready!  
Now your home is protected!**



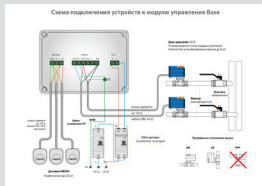
**Operation Check**

Connect the sensor contacts with metal object



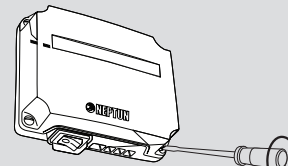
Make sure that the valve/s have closed

**Connect all the System components**



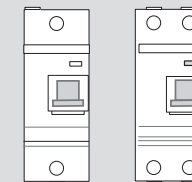
See the reverse for Connection Schematics

**Install the Control Module 3**



Control Module is connected with four screws (not included). For installation, please remove the device front cover lid

**Provide the 230V power through RCD and/or Circuit Breaker / Automatic Fuse**



(not included)