

Ready-Made Kits

Neptun is a modern intellectual systems for water leakage control, protecting property from water damage and preventing financial losses.

In case of water leakage, Neptun System quickly shuts water supply off until the source of leak is eliminated.

Neptun System operates automatically and does not require regular service for proper work.



Neptun PROFi WiFi

Modern system that may be operated via an application installed in a smartphone. Autonomous power source. Brass of Stainless Steel Power Actuated Valves



Neptun ProW+

Versatile 12V system with autonomous power source. Supports both wired and wireless water leak sensors.



Neptun ProW

Wired 12V system with autonomous power source



Neptun Base

Budget 230V wired system - Best balanced price and quality



Neptun Base Light

Budget 230V wired system - Most economical option

Neptun ProW+WiFi New Generation Control Module

Remote control
with smartphone
using Wi-Fi

Operated via SST Cloud mobile application



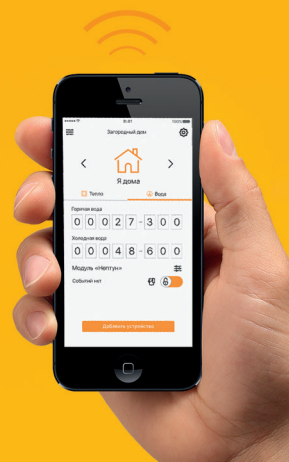
Neptun ProW+WiFi provides new level of safety and comfort

From now and on, there's no need to be concerned about your home water supply that needs to be shut off. Wherever you are, it can be done in several touches on your smartphone screen.

In case of the system, will automatically shut thye water off and send then message to your smartphone. You can also read the meters and control water consumption online.

SYSTEM FUNCTIONS:

1. Water leakage prevention
2. Flood accident alarm sent to the smartphone
3. Water supply management (water valve on/off)
4. Water meters reading online - water consumption monitoring
5. Both wired and wireless sensors support
6. May be integrated into SmartHome and Alarm systems
7. To prevent scaling, electric actuated valve/s are test-turned twice a month automatically or remotely through the smartphone
8. Autonomous power supply in case of black-out
9. Leakage location identification with indication by 4 zones, with data sent to the smartphone



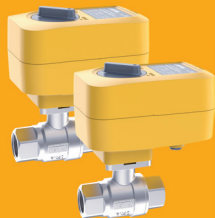
WATER LEAK PREVENTION SYSTEM



Ball Valves

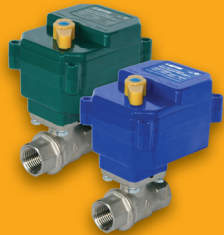
Reliable and Convenient

Electric power actuated ball valves are designed for shutting water supply off in water and heat supply systems. Full pass-through, power shaft mechanism is equipped with metal gears. The valves are test-turned (open/close) once or twice a month in order to maintain the system reliability, even in case of excessive scale (hard water). The valve is powered only during the test turn



Neptun PROFI 12V / 220V

Rated Pressure: 40 bar
Material: Stainless Steel
Shut-Off Timing: 21 sec
Torque: 9 N·m (230V) / 16 N·m (12V)
Power Consumption: 10W (230V) / 1.4W (12V) (while opening/closing)
Manual Drive: Handle on the Case



Neptun Bugatti Pro 12V / 230V

Rated Pressure: 40 bar
Material: Hot Forged Brass
Shut-Off Timing: 21 sec
Torque: 9 N·m (230V) / 16 N·m (12V)
Power Consumption: 10W (230V) / 1.4W (12V) (while opening/closing)
Manual Drive: Handle on the Case



Neptun Aquacontrol 230V

Rated Pressure: 16 bar
Material: Hot Forged Brass
Shut-Off Timing: 18 sec
Torque: 8 N·m
Power Consumption: 10W
Manual Drive: Power Drive Manual Disassembly

Control Modules

Reliable System Management with Broad Functionality

Neptun Control Modules manage Ball Valves and Water Leak Sensors operation and provide visual and sound alarm in case of accident



Neptun ProW+WiFi

New generation module with an option of smartphone app management via WiFi, as well as cold and hot water consumption monitoring, supporting both wired and wireless sensors. Recommended for industrial facilities, hospitals and schools, hotels and other businesses, residential and investment properties.



Neptun ProW+

Versatile module supporting both wired and wireless sensors, with autonomous power source. Recommended for mid-size and small businesses, as well as residential properties - private houses and apartment complexes.



Neptun ProW

Module with autonomous power source and leak location identification. Recommended for small businesses, as well as residential properties - private houses and apartments.



Neptun Base/Base Light

Basic module supporting wired sensors, only. Recommended for private homes and apartments.

Sensors

Automatic water leak detection

In case of an accident, the sensors detect the leak and send the signal to the Control Module



RSW+

Wireless sensor with battery replacement



SW 005

Wired sensor with modern design. Compatible with all Neptun Control Modules



SW 007

Round-shaped wired sensor. Suitable for surface-flush installation. Compatible with all Neptun Control Modules

EXAMPLE: Water Leakage Detection System Installation

